

Creating a colour corrected environment for a Trueshade



a closer look...

Optilume Trueshade

Conventional surgery lighting has proven inadequate for accurate colour perception during shade taking procedures.

Guidelines regarding time of day and direction faced are open to numerous natural variances and therefore cannot be consistent. Utilising the latest Optilume LED technology provides immediate and reproducible diffused light, eliminating the problem of light source deterioration experienced when using fluorescent, and other conventional surgery light sources.

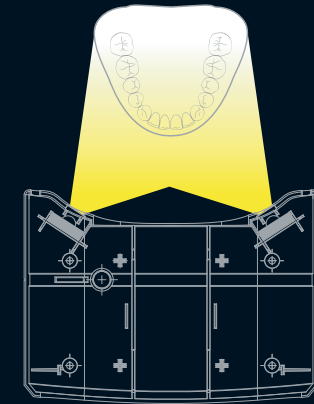
Optilume Trueshade - the only LED light for use with any restorative technique or material, that provides instant, correct and consistent daylight (5500K) at the correct proximity to the working site. (Patents Pending)

Uncompromising lighting for shade matching and characterisation.

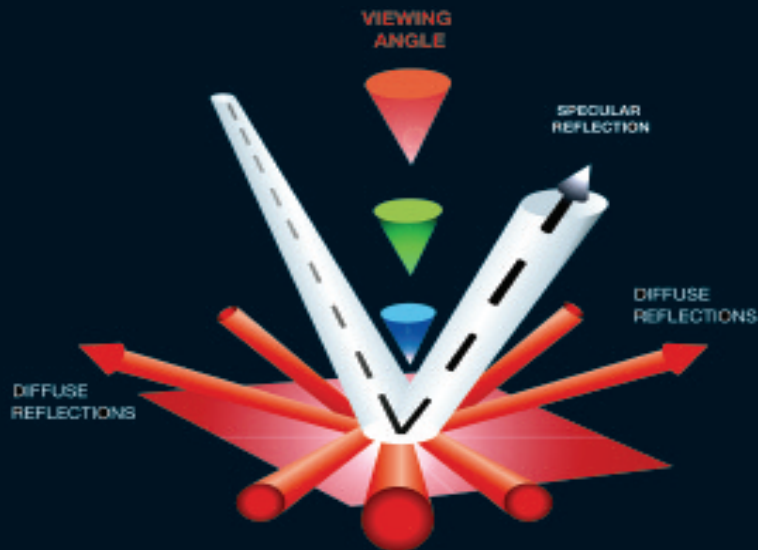


0/45°

- 0/45° Lighting Geometry conforming with colour measurement standard eliminating specular reflections
- Colour Corrected Light: every Optilume Trueshade is specifically calibrated to emit light with a constant colour temperature of 5500K, providing the user with an unparalleled colour corrected environment.
- Complies with illumination intensity recommendation for dental shade evaluations.*
- Optilume Trueshade has a unique feature allowing the intensity of the light to be reduced for the accurate assessment of the value and the micro and macro morphology, whilst maintaining the required 5500K colour temperature.



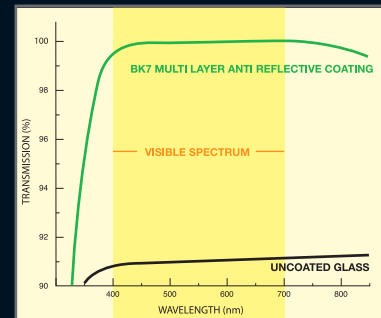
Unique BK7 crown glass coated lens



Specular reflection



Diffuse reflection

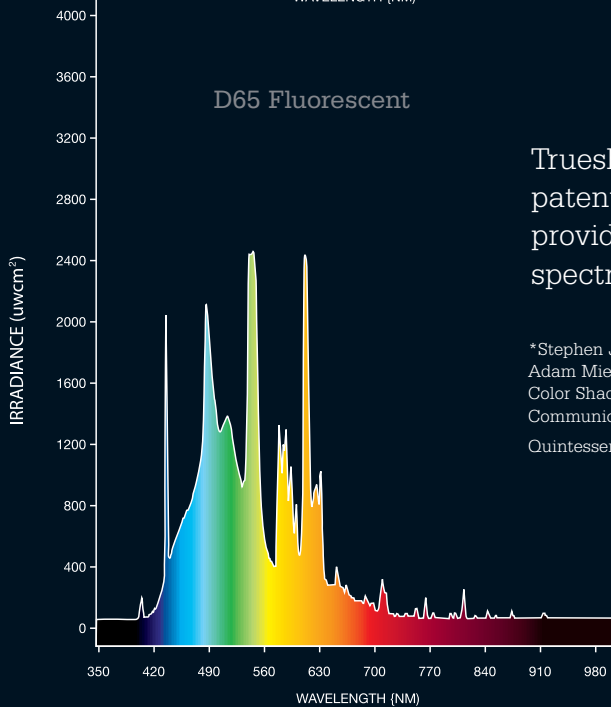
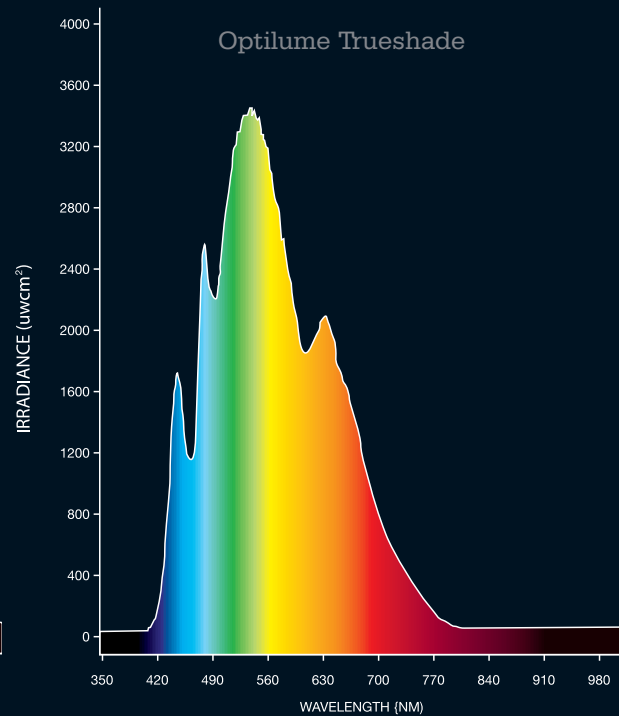
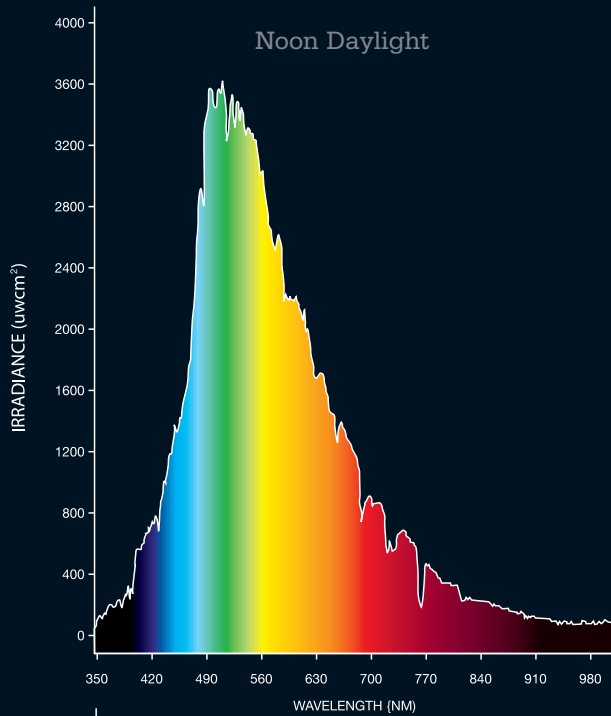


Multi layer coating allowing an even transmission in the visible spectrum.



Optical quality BK7 multi layer anti reflective coating crown glass 2x magnification.

- High linear optical transmission in the visible spectrum compared with uncoated glass
- Constant colour light source previously unavailable in dental lighting
- Highest optical quality 2 x Magnification BK7 crown glass lens
- Portable device with integral Li-Ion rechargeable battery
- Intelligent charger module



Trueshade unique patented LED array providing broadband spectrum at 5500 Kelvin

*Stephen J Chu, Alessandro Devigus, Adam Mieszko, Fundamentals of Color Shade Matching and Communication in Esthetic Dentistry. Quintessence Books 2004



Ambient lighting



5500 Kelvin providing optimum light conditions for accurate colour interpretation



Integral intelligent charger base unit

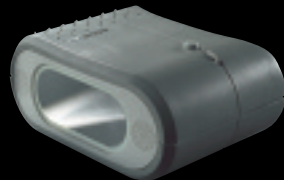


- Set the desired intensity via the dimmer control located on the top cover.
- Lower the intensity for value, macro and micro morphology assessment.
- Adjust position for the desired magnification.
- View patients teeth along with shade guide.



The first standard in colour corrective LED lighting **Truershade**

Trueshade



Optilume Trueshade
Order no. 2005.01

optident
dental products